



OLJE- OG ENERGIDEPARTEMENTET

*Ministry of Petroleum and Energy*

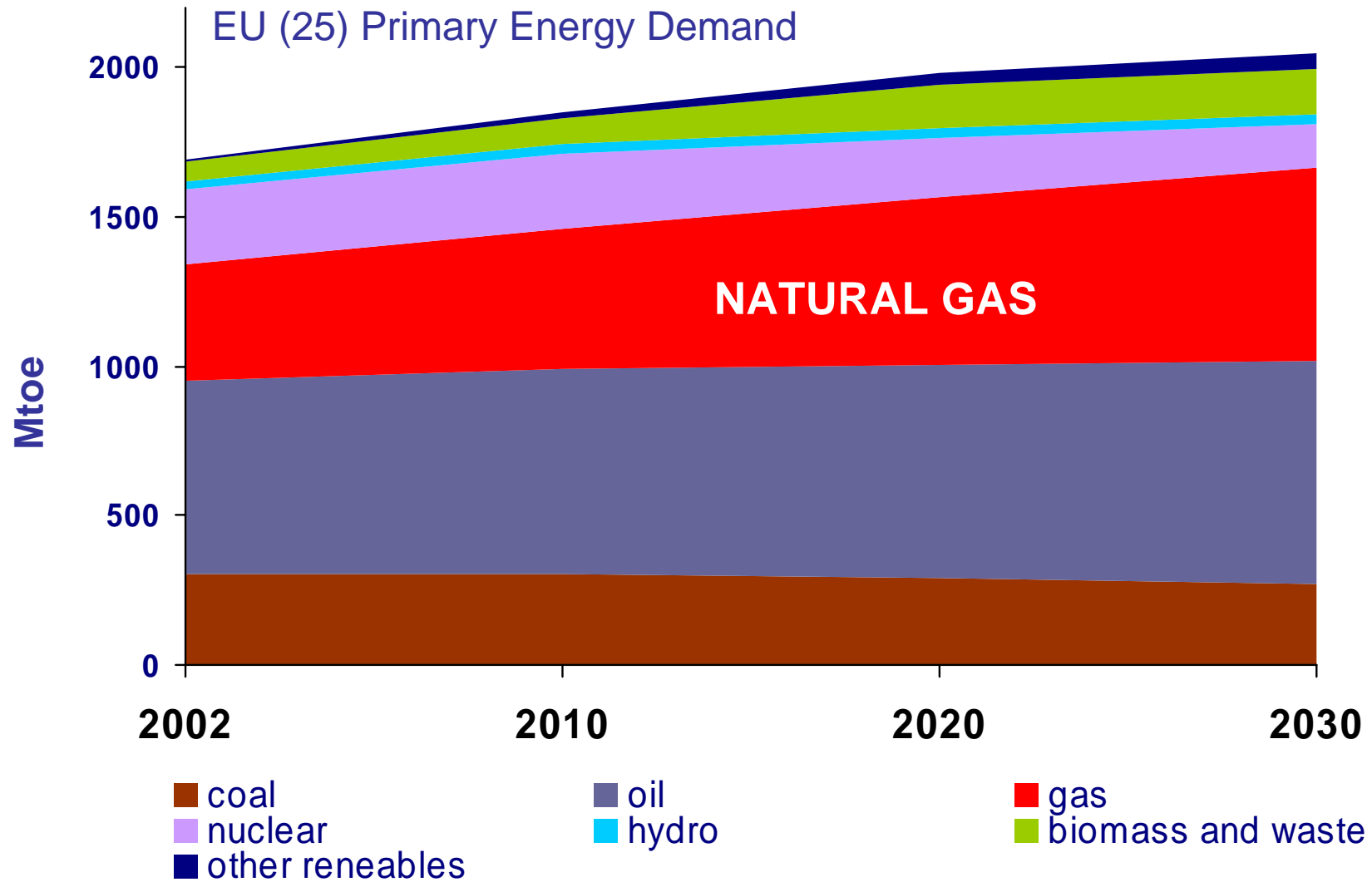
# Norway's role in the European gas market

The 13th European Gas Conference,  
Oslo, May 24, 2005

Thorhild Widvey

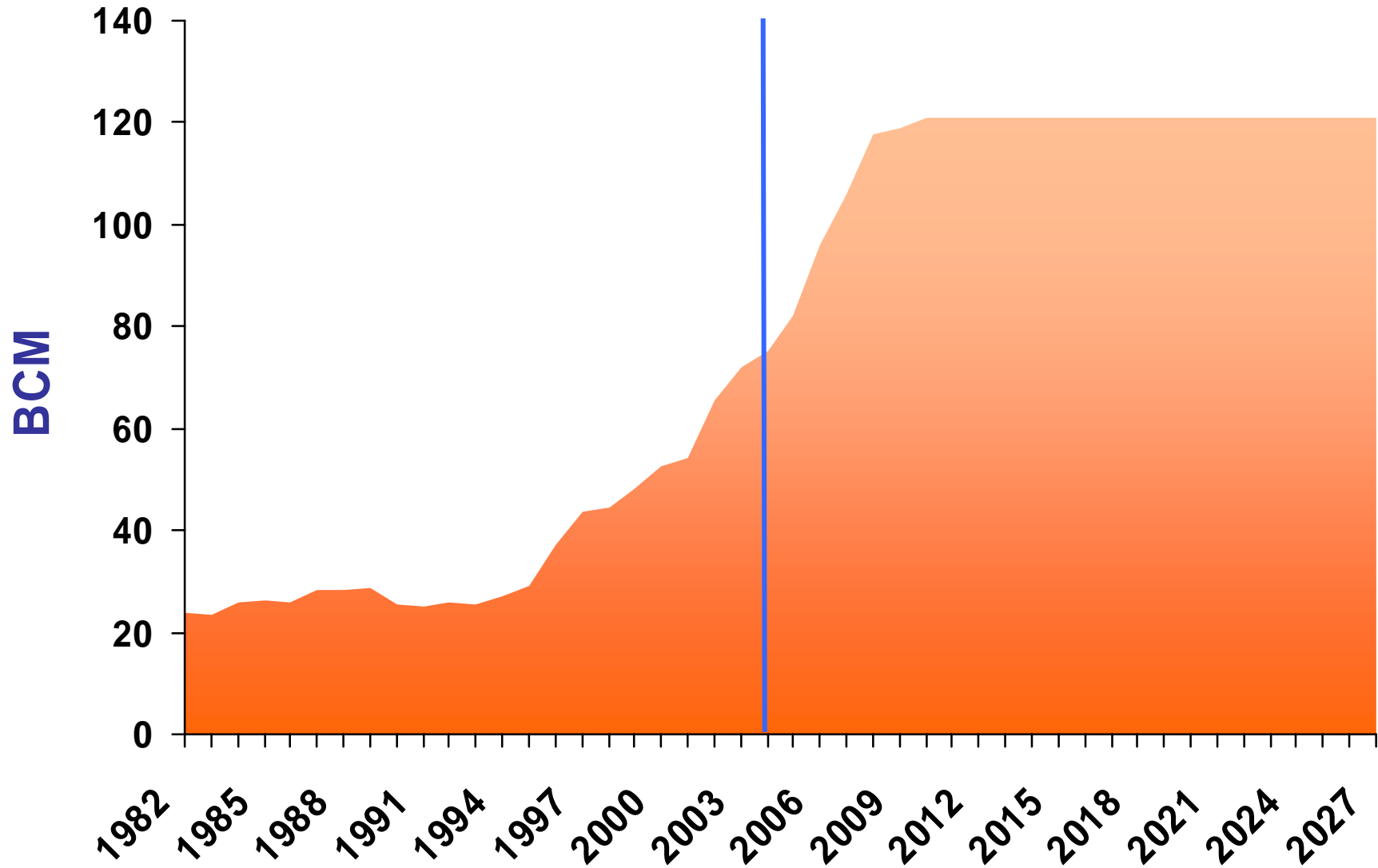
Minister of petroleum and energy, Norway

# European Energy Outlook



Source: IEA World Energy Outlook (2004)

# Norway's contribution



Source: NPD/MPE

# Troll – the giant on NCS

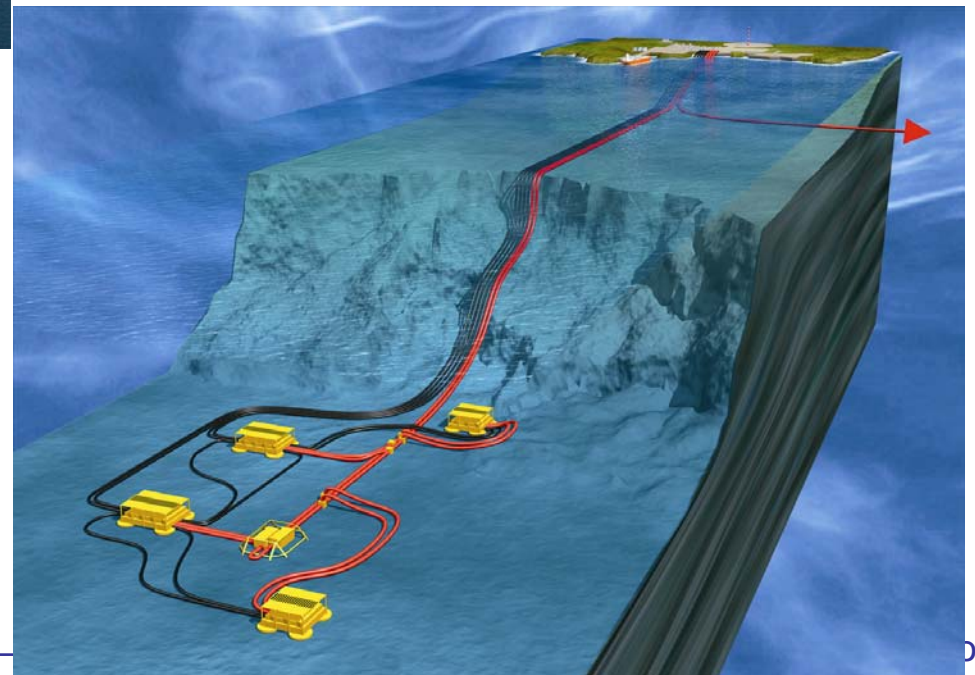
- Troll has played a major role in the development of the NCS
- The largest gas field and the largest oil-producing field
- Large reserves yet to be developed.



# Snøhvit LNG



# Ormen Lange

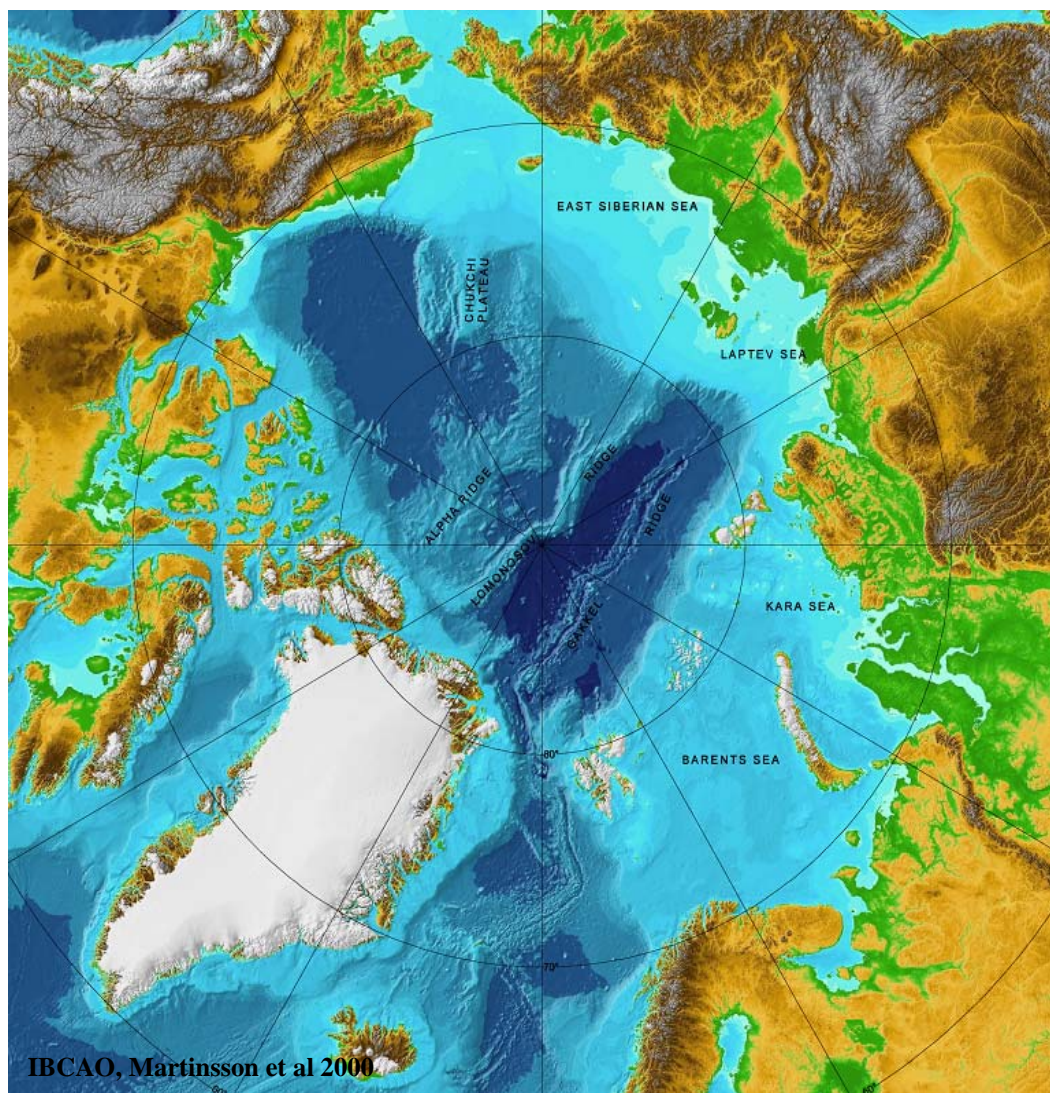


# Transport solutions from the Norwegian Sea

- Agreed transportation solution for Skarv
- Gassco plays a central role in infrastructure development
- Infrastructure development requires petroleum resources and willing investors



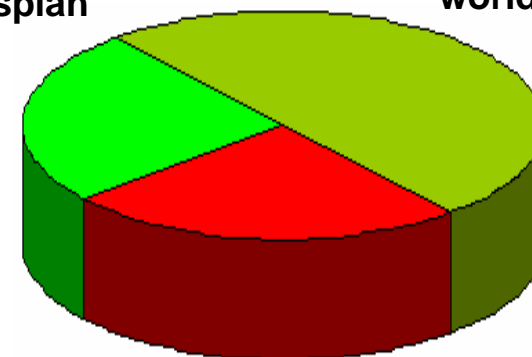
# Large potentials in the arctic region..



**25 % of the worlds undisccovered resources is to be found in the arctic regions, according to USGS**

**N. Africa,  
The Caspian  
Ocean,  
M. east**

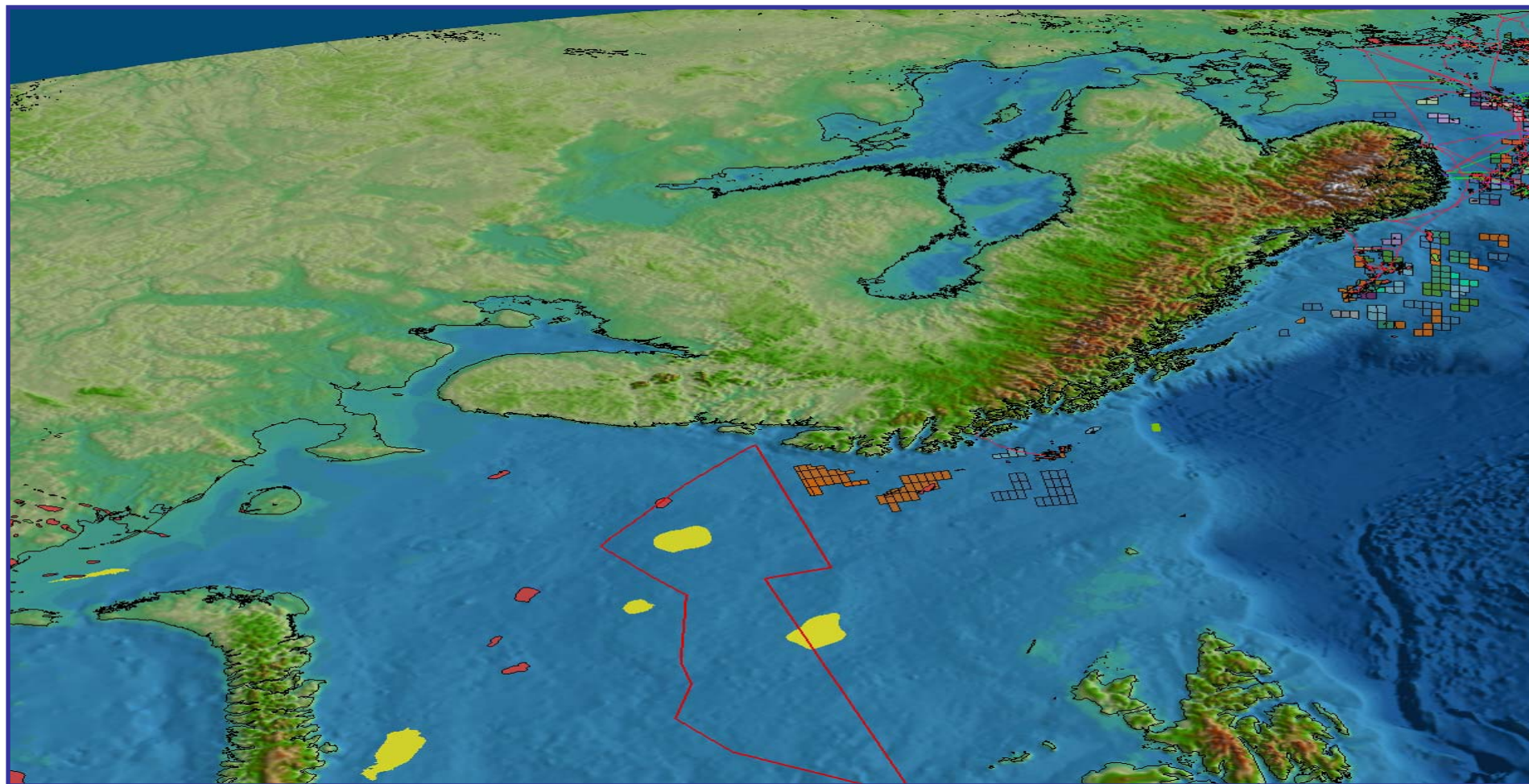
**Rest of the  
world**



**Arctic**

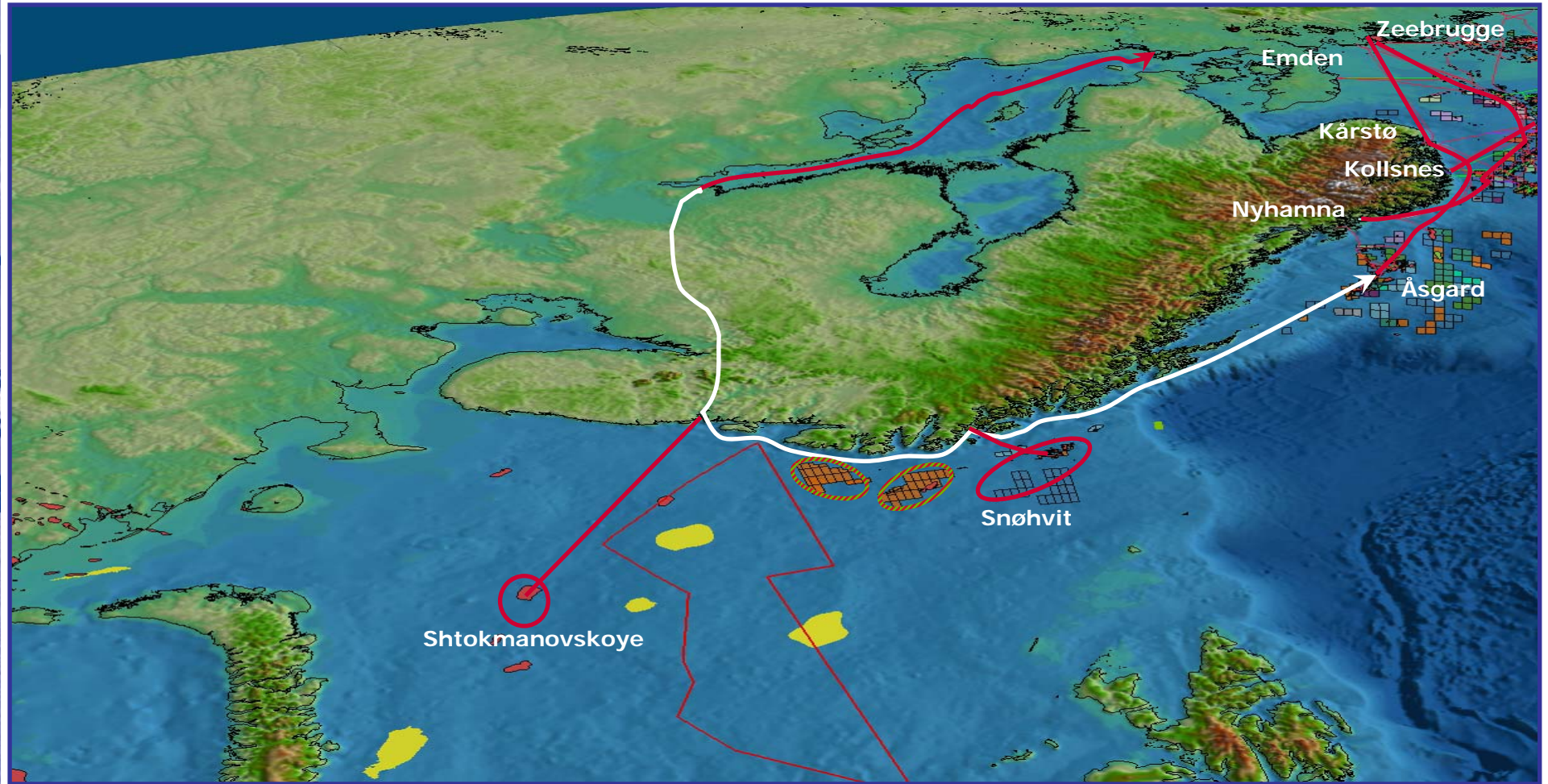
**Source: USGS, Statoil**

# Barents Sea - long term perspective





# Barents Sea - long term perspective



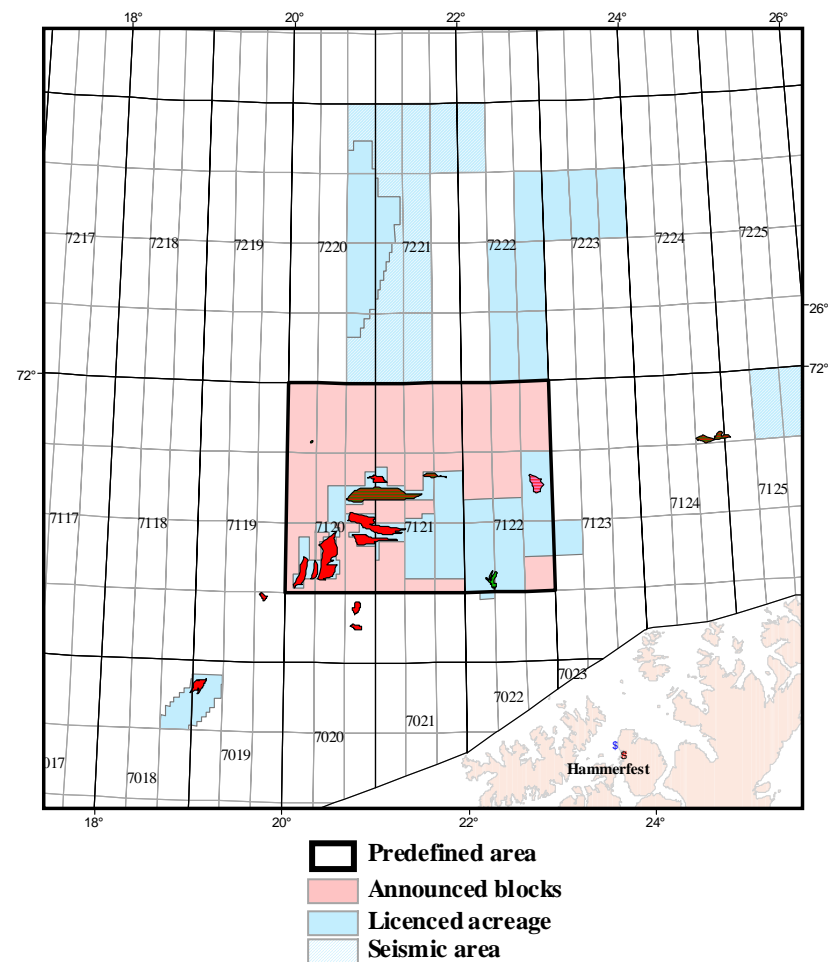
# Upcoming activity in the Barents Sea

## Activity right now:

- Snøhvit LNG under development
- Current exploration drilling

## Coming up:

- Awards in predefined areas 2005
- 19th consession round



# European Gas Market

## *Continental markets*

- Increasing demand
- The NCS is geographically well positioned
  - now serving about 14 % of the European market

## *UK Gas Market*

- Growing gap between indigenous production and demand
- Many import projects in planning or development phase
  - LNG terminals, BBL, Interconnector expansion, Langede, Tamen Link

# New Capacity from the NCS to the UK

- Significant capacity increases from the NCS in 2006 and 2007
  - Langedled
  - Tampen Link
- Ormen Lange on stream in 2007
  - will supply the UK market with 20 BCM/y

